

2021  
Installation Guide

 latch.it







# How to Install your New Compartment Locks

1. Gather the following tools:
  - a) Adjustable Open-End Wrench.
  - b) A 7/16" socket to tighten the **Nut**.
  - c) A 7/8" socket to tighten the **Hex Nut**.
2. Attach **O-ring** to **Cam Lock Body**.
3. Slide **Cam Lock Body** through compartment lock hole and screw on **Hex Nut** to hold it in place.
4. Place **Anti-Slip Washer** in correct orientation so it fits **FLAT** with the lock body.
5. Place **Latch** onto **Cam Lock Body**.
6. Attach **Locking Washer** and hand screw **Nut**. Tighten nut to hold everything in place. Do not over tighten.



Nut



Locking Washer



Anti-Slip Washer



Cam Lock Key



Hex Nut



O-Ring



Latch

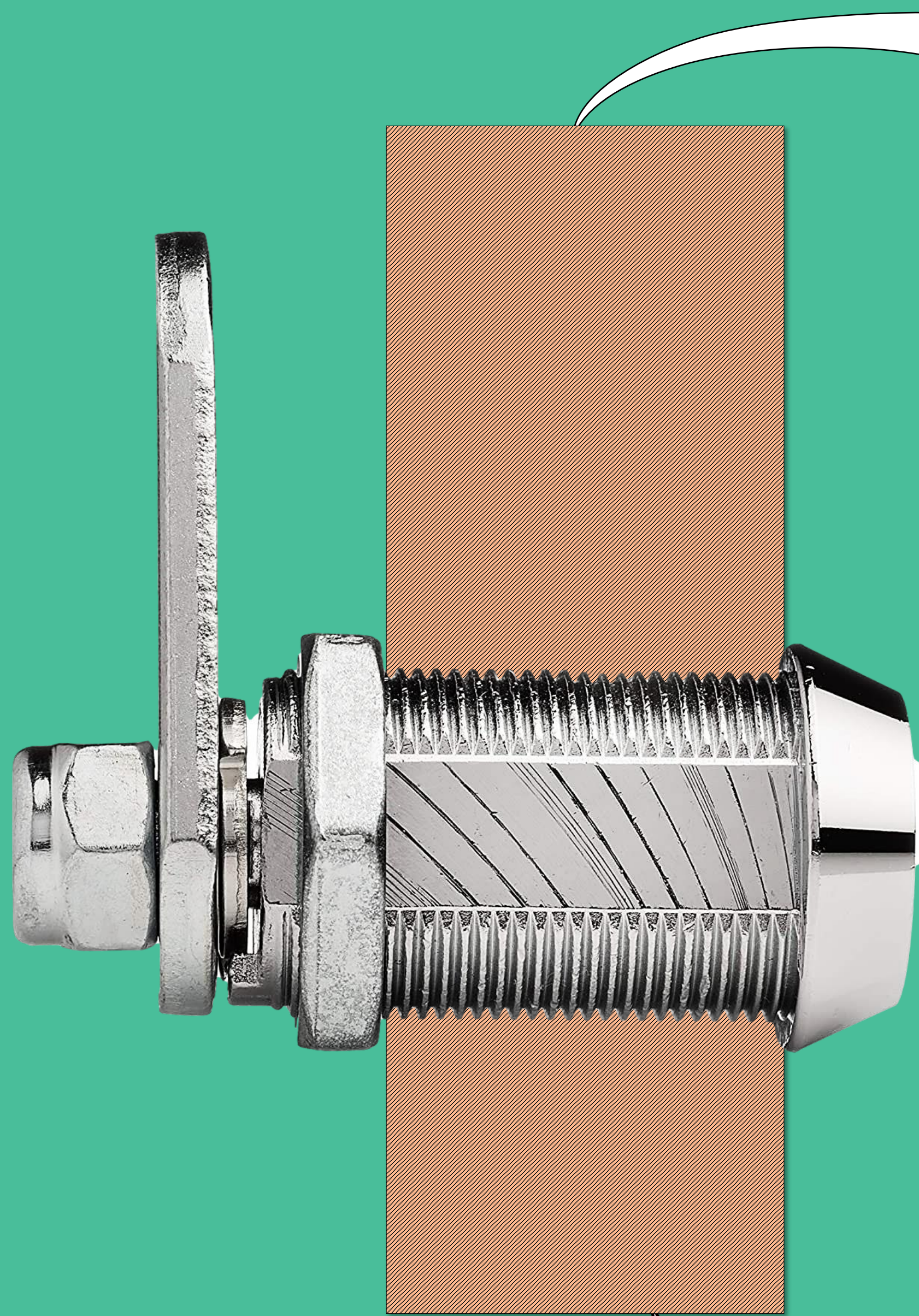


Cam Lock Body





# Cam Lock Install Order



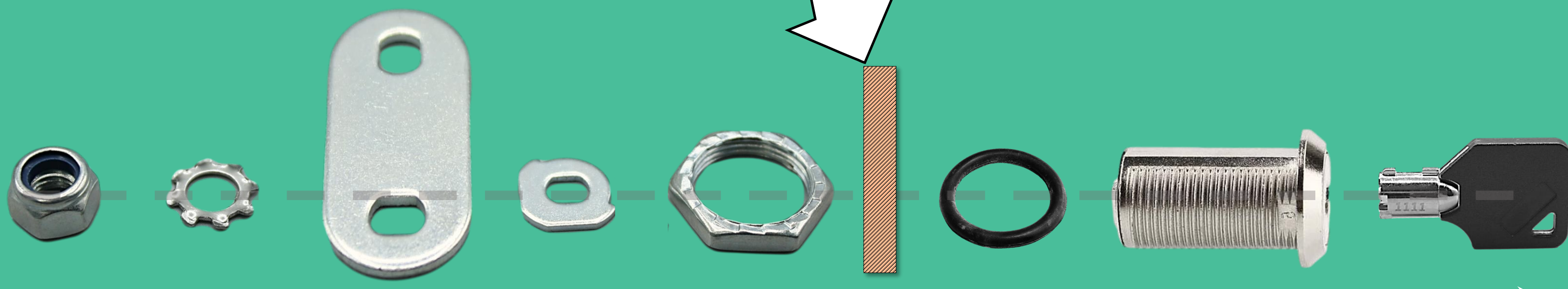
RV Storage  
Door

*or*

File Cabinet  
Door

*or*

Desk Drawer  
Door



INSTALL IN THIS ORDER



# Full Walkthrough Video Instructions

Don't want to READ all the instructions? We got your back!

- ✓ Simply scan the QR Code with your smart phone camera and head over to our "How-To" videos.

*Scan me*



— OR —

[www.latchit.org](http://www.latchit.org)

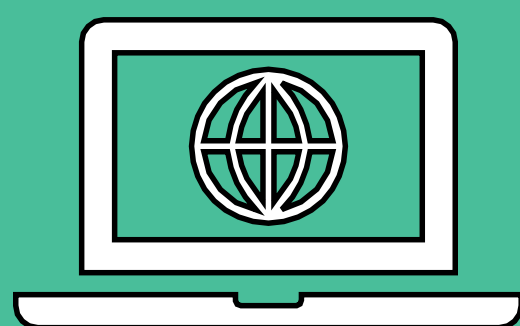




Questions, Stuck on  
Something, or Simply want  
to Talk to an Expert?



hello@latchit.org



www.latchit.org



/Latch.it.Lock



/Latch.it